

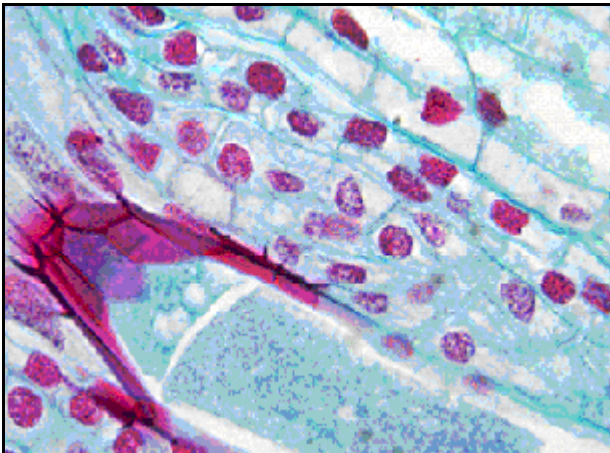


## 3.3 Megapixel CCD USB 2.0 Camera

High Resolution CCD Color  
Microscopy Camera for Qualitative Image Archiving

## Outline

Lumenera's INFINITY2-3 digital CCD color camera offers excellent sensitivity and high resolution. This is an ideal camera for brightfield, darkfield, and DIC imaging applications where higher resolution archiving and a wide dynamic range are routinely required. With 2080 x 1536 resolution and on-board processing, the INFINITY2-3 delivers outstanding image quality for a wide variety of scientific applications.



Live video preview provides for real-time focus while auto exposure and auto white balance efficiently capture your optimal image. An intuitive user application provides camera controls while full integration to popular third-party imaging applications is available through our TWAIN drivers.

The USB 2.0 digital interface ensures a simple plug and play installation – and one standard cable minimizes camera clutter. No framegrabber required.

The INFINITY2-3 camera is supported by an experienced team of technical support and imaging experts. We understand your imaging needs and are here to help you get the most out of your camera.

## Performance Features

- ❑ **The high-speed USB 2.0 interface eliminates a framegrabber and facilitates ease of installation on both laptop and desktop computers**
- ❑ **The low noise characteristic of the INFINITY2-3, 3.3 megapixel CCD image sensor results in crisp color quality for the most demanding brightfield and darkfield microscopy applications including clinical pathology and cytology, histology, life science and geology**
- ❑ **Full color sub-windowing allows for rapid focus and scanning of samples: 5 fps at full 2080X1536 resolution**
- ❑ **Select 8 and 12-bit pixel data modes**
- ❑ **The RGB data captured through each pixel contains 36-bits of color image information resulting in 4096 intensity values**
- ❑ **Camera control through an intuitive user TWAIN interface results in rapid image capture archiving and documentation for high throughput applications, demanding research environments and teaching facilities.**
- ❑ **The INFINITY2-3 has a compact design equipped with a C-Mount, facilitating installation on all microscope configurations including upright, inverted and stereo**
- ❑ **INFINITY2-3 cameras are software compatible with Windows™ 98 SE, Windows ME, Windows 2K and Windows XP operating systems**

# Specifications

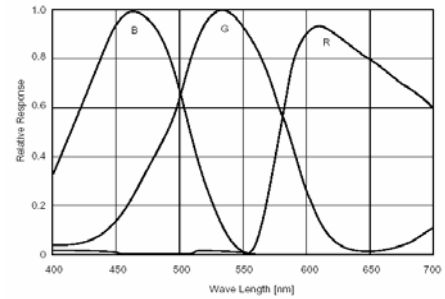
# INFINITY2-3

## Camera Sensor

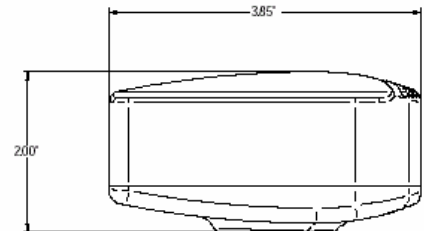
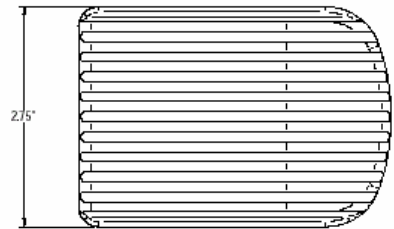
Image Sensor	<b>1/1.8" Interline Sony ICX262 3.3 megapixel color progressive scan CCD sensor</b>
Effective Pixels	<b>2080 x1536, 3.45µm square pixels</b>
Frame Rate	<b>5 fps at full resolution, higher fps with binning and ROI</b>
Digital Output	<b>8 and 12-bit</b>
Read Noise	<b>12 e- rms</b>
Readout Frequency	<b>22.5 MHZ</b>
Dimensions (W x H x D)	<b>2.25 x 3.85 x 1.56 inches (enclosed)</b>

## Camera Controls

Mass	<b>~300g</b>
Power Requirement	<b>USB bus power, or external 5VDC - 500mA</b>
Power Consumption	<b>~2.5Watts</b>
Operating Temperature	<b>0° C to +50° C</b>
Operating Humidity	<b>5%-95%, Non-condensing</b>
Integration Time	<b>1/1000 to 16 sec.</b>
Shutter	<b>Interlaced</b>
ROI	<b>User Selectable through mouse click and drag</b>
Auto Exposure	<b>Automatic / Manual</b>
White Balance	<b>Automatic / Manual</b>
Gain	<b>Programmable / 1to 10x optimizable</b>
Interface Connector	<b>Standard USB 2.0 high-speed interface</b>
Dimensions (L x W x H)	<b>3.85 x 2.00 x 2.75 inches</b>
Lens Mount	<b>C-Mount lens adapter</b>
Binning Options	<b>2x2, 3x3, 4x4</b>



Color Response Curve



## Recommended PC Specs:

- Pentium 4, 1.3GHz or higher
- 512Mb RAM
- 60 GB hard drive free space or more
- USB 2.0 Port
- Windows 2000 or XP

## Minimum PC Specs:

- 600MHz Processor
- 256Mbytes of SDRAM
- 20GB hard drive free space
- USB 2.0 Port
- Windows 98 or ME

## Product Includes:

- INFINITY2-3 digital camera for USB 2.0
- CD-ROM with Infinity user application software
- TWAIN driver
- Documentation
- USB 2.0 cable

## Ordering Information

INFINITY 2-3C – Color Camera

INFINITY 2-3M – Monochrome Camera

**Full customization available  
to meet your exact needs!**