

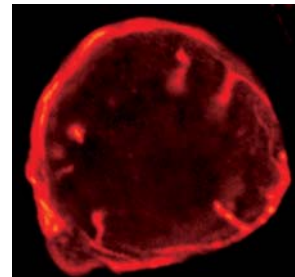
# MultiProbe

## Your Solution for FISH, GFP, and Immunocytochemistry

### MULTI-SPECTRAL AND MULTI-MODE SOFTWARE

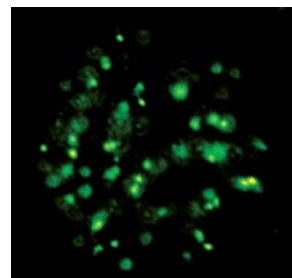
#### The MultiProbe Software

MultiProbe is an IPLab for Windows extension module with a number of tools to aid in the processing and visualization of multiple wavelength image data. MultiProbe's handling of multiple channels of data make it ideal for research using Fluorescence *in situ* Hybridization (FISH), GFP, and immunocytochemistry. Complete systems for multi-wavelength analysis are available, including cameras, filter wheels, and all the software to control the entire acquisition process.



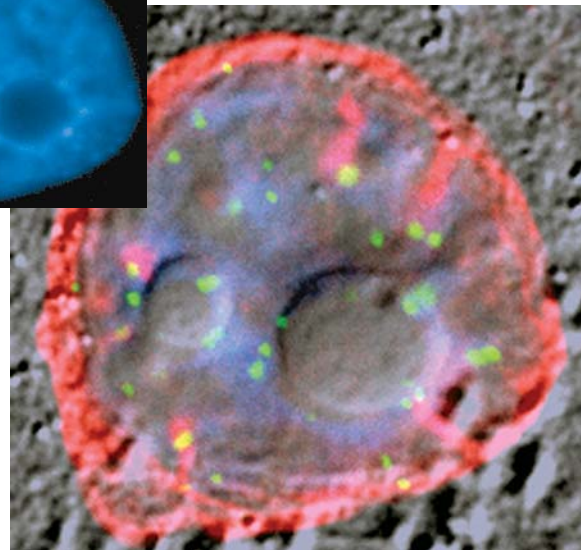
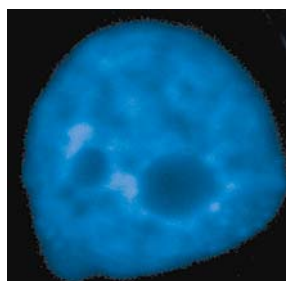
#### Merging Fluorescence and Brightfield Images

Using MultiProbe, you can interactively create a color image from as many as 6 different images. When merging images, a DIC or phase (or other grayscale) image may be used for position-referencing. Five fluorescence images can be layered on top, represented by additional color channels. Variable blending can also be used to better identify areas of co-localization.



#### Adjust Alignment, Contrast

MultiProbe helps you adjust the contrast and alignment of each color channel independently. You can easily fix pixel-shifts caused by misaligned filters. You can also adjust contrasts and blending to improve the visibility of important details in your sample.



8550 Lee Highway, Suite 400  
Fairfax, VA 22031 USA  
(Tel) 703-208-2230 (Fax) 703-208-1960  
(Email) [info@scanalytics.com](mailto:info@scanalytics.com)  
(Web) [www.scanalytics.com](http://www.scanalytics.com)