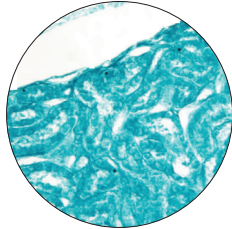




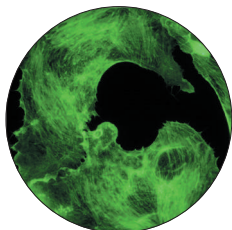
# Pro 150ES & 600ES

## 1.5 & 5.8 Million Pixel Digital Camera Systems

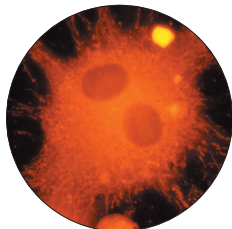
Windows & MacOS



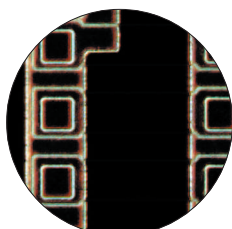
Brightfield



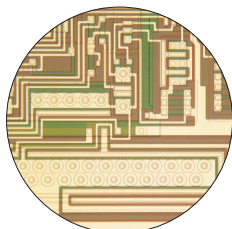
DAPI, niba  
Fluorescence



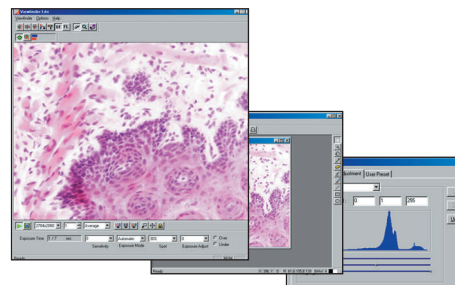
DAPI, wig  
Fluorescence



Integrated Circuit Wafer  
Darkfield



Integrated Circuit Wafer  
Brightfield



15fps Color Viewfinder (640 x 480 pixels), Studio and Level Adjustment

**1.5 Million REAL Pixels - Pro 150ES**  
**5.8 Million REAL Pixels - Pro 600ES**  
**Sensitivity, 0.05lux**  
**Signal-to-Noise Ratio: 62dB**  
**Fast 15fps Color Viewfinder (640x480)**  
**24/48 bit RGB True Color Imaging**  
**Fluorescence**  
**Long Integration Exposure**  
**Live Specimen Capture @ 1.5M Pixels**

### Applications:

- Fluorescence
- Darkfield Transmitted/Reflected
- Brightfield Transmitted/Reflected
- Polarized Light
- Phase Contrast
- DIC / Nomarski Transmitted/Reflected
- Hoffman Modulation
- Gel Documentation
- Materials Science

### Pro 150ES & Pro 600ES - Digital Camera Systems

The Pro 150ES & Pro 600ES offers the most versatile price performance solutions for microscopy imaging in Pixera's product range. Both systems will provide you with a very high image quality, true color 24/48bit RGB, excellent sensitivity and dynamic range, and when you need the absolute highest image quality and resolution for archiving, digital zoom in and publishing, the Pro 600ES with maximum resolution of 5.8 million pixels is your best choice. A 5.8 million pixel capture produces a 17MB file size, uncompressed. Utilizing the advanced frame averaging and integration functions, the system will enable you to capture fluorescence and darkfield images with reduced thermal noise

Unlike other digital camera systems which increase resolution using software interpolation, the Pro 600ES allows for a true optical resolution of 5.8 million pixels using Pixera's proprietary DiRactor™, light-swinging opto mechanical technology. The Pro 150ES offers you up to 1.5 million pixels.

Both systems feature a fast 15 frames per second color viewfinder with a numerical alignment indicator that makes it simple to focus. All of Pro 600ES & Pro 150ES pre-exposure default settings are adjustable via easy controls and indicators in the Viewfinder including unlimited saving of prior capture settings for future use.

Either camera system is a productivity tool offering the highest image quality and user friendly controls.

### Camera System Features

- Resolutions:  
Pro 600ES: 2776x2074, 1392x1040, 640x480  
Pro 150ES: 1392x1040, 640x480
- Image Sensor: 1/2", 1.5 million pixel Color CCD
- Sensitivity: 0.05lux
- S/N Ratio: 62dB
- Dynamic Range: 60dB
- Color Depth: 24 or 48 bit RGB
- Image Processing Speed\*: 5-20 sec
- Viewfinder\*\*: Up to 15 fps @ 640 x 480 pixels
- Long Integration Exposure, up to 64 min
- Sensitivity: ISO 50/100/200/400
- Save & Preload Prior Image Capture Settings
- RGB Color Specific Enhancement
- Spot Detection (Variable size and location)

### Image Format

- BMP, JPEG, TIFF, PICT, Flash Pix

### Penguin/Pro Application Suite

- Windows:
- Pixera Viewfinder
  - Pixera Studio
  - TWAIN Viewfinder
- MacOS:
- Pixera Studio
  - Photoshop Plug-In - MacOS

### Options

- External Hand Switch (Remote Image Capture)
- Foot Switch (Hands Free Image Capture)

### System Requirements

- Windows 95/98/Me/NT/2000/XP
- MacOS 9.0-9.2
- PCI interface slot for desktop PC
- CPU/Windows: 300MHz or faster
- CPU/MacOS: Blue/White G3 or later
- RAM for Windows: 128MB or more
- RAM for MacOS: 256MB or more
- HDD: 100MB of free space or more
- Monitor: 1024 x 768 pixels or more
- Color: 16 bits or more recommended

\* Including the processing time to display  
 \*\* Maximum frame rate is system dependent  
 \*\*\* Maximum exposure time