

DXC-S500

Color Digital Camera

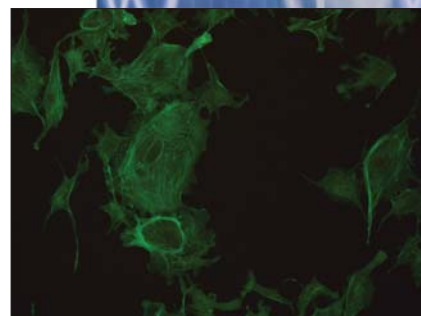
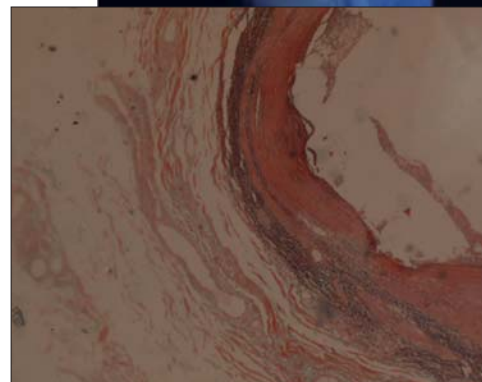
Ideal for its excellent connectivity with PCs, the DXC-S500 proves to be an ideal digital camera for microscopy. Comprised of two separate units, the DXC-S500 has a compact and lightweight camera head with a built-in Peltier cooling device, and a camera control unit with an integrated 3.5-inch (viewable area, measured diagonally) LCD monitor. The 2/3 type 5M-pixel (4.91 megapixels effective; 5.24 megapixels gross) CCD incorporated in the camera head provides ultra-high-resolution images and precise color reproduction.

With excellent picture quality, sophisticated features and PC-friendly operation, the Sony DXC-S500 is the ideal system to support your medical and scientific microscopy applications.



- Superb picture quality (2560 x 1920)
- Built-in Peltier CCD cooling system
- Long-term exposure shooting
- IEEE-1394 interface
- PC card slot for on-board image storage
- TWAIN driver
- Analog video output
- Selectable image size and recording format
- User-friendly operation
- UL-2601 Listed

SONY®



Sony Medical

DXC-S500

Specifications

DXC-S500

CCD

Pick-Up Device	2/3type IT (Interlined Transfer) CCD, interlaced scan
Color Filter	R,G,B primary color filter
Pixel Number	4.91 megapixels effective (5.24M pixels gross), 2658 (H) x 1970 (V)
Recording Pixel Elements	2560 (H) x 1920 (V)
CCD Size	9.74mm(H) x 7.69mm(V) Square pixels

CAMERA SYSTEM

Lens Mount	C mount
Flange Back	17.526mm in air
CCD Cooling	Cooled to 5 degrees (room temperature 0 ~ 35 degrees)
ISO Rating	100/200/400 selectable or FL_mode
Gain	Auto (AGC) : 0dB, 6dB, 12dB selectable Manual : 0 ~ 12dB by 1dB step
Shutter Speed	Auto/Manual (60-1/10,000sec)/Electrical shutter
Gamma	ON/OFF
White Balance	Auto/Manual (R/B gain)
Flash	Ext: Input mode/Output mode
User File	1/2/3 switchable (3 pattern memories)
Electrical Zoom	x2 (VGA size)
Black/White	ON/OFF
Interval Recording	ON/OFF Max.24 hours
Picture Rotate	0/180 degrees selectable

LIVE PICTURE

Image Size	640 x 480 pixels
Frame Rate	30fps/25fps (PAL)
Display	Digital interface and analog video output

COLOR LCD DISPLAY

Display Size	3.5 inches (viewable area, measured diagonally)
Pixel Number	200K dots
Frame Rate	NTSC: 30f/s PAL: 25f/s

IMAGE RECORDING

Recording Media	PC card type removable HDD (PCMCIA-ATA type II) Max.5GB Memory Stick (with PC card adapter for MS) Max.128MB, Compact Flash (with PC card adapter for CF) Max.330MB, SmartMedia™ (with PC card adapter for SM) Max.128MB
-----------------	--

Max. Recording Pixel Number	2560(H) x 1920(V)
Recording Pixels	3modes: 2560x1920, 1280x960, 640x480
Image File Type	TIFF, JPEG (3 mode)

SOFTWARE

TWAIN Module	Bundled: for WIN/MAC
Support OS	Windows 98SE/ME/2000/XP, MacOS8.6/9.0/9.1/9.2
Support Application	Image-Pro Plus ver4.5 or later (for WIN) Photo shop ver5.0 or later (for WIN/MAC)

Output Signal	IEEE1394(400Mbps), 8bit YUV VBS : 1.0Vp-p, 75ohm, sync negative Y : 1.0Vp-p, 75ohm C : NTSC 0.284 Vp-p, 75ohm (without sync), PAL 0.3Vp-p, 75ohm (without sync)
---------------	---

Operating Temperature	-5 to 45 degrees (23 to 113 oF)
-----------------------	---------------------------------

Power Supply	100 to 240V AC, 50/60Hz
--------------	-------------------------

Dimensions	CHU: 56 (W) x 72 (H) x 72 (D) mm CCU: 270 (W) x 163 (H) x 79 (D) mm
------------	--

Mass	CHU: 300 g (10 oz), CCU: 1.8 kg (3 lbs 15 oz)
------	---

Connectors	IEEE1394 (6-pin jack) PC card (PCMCIA-ATA type II), VBS (BNC) S-Video (Mini DIN 4 pin) External trigger in (BNC), Flash out (X) FS/TRIG IN (stereo mini jack), AC Inlet Camera cable connector (10pin)
------------	---

Supplied Accessories	Warranty Card TWAIN Driver Software (CD-ROM), Lens Mount Cap Camera Cable, Operation Manual Installation Manual, AC Cable, 3pin Transfer Cable
----------------------	---



DXC-S500 Camera Back



DXC-S500 Back Panel



DXC-S500 Work Station

SONY

Sony Electronics Inc.
1 Sony Drive, Park Ridge, NJ 07656

www.sony.com/medical

©2002 Sony Electronics Inc. All rights reserved. Reproduction in whole or in part without written permission is prohibited. Features and specifications are subject to change without notice.
All non-metric weights and measures are approximate. Sony is a trademark of Sony. SmartMedia is a trademark of Toshiba Corporation.

Caution: Federal (USA) law restricts this device to sale by or on the order of a physician or other appropriately licensed medical professional.
Caution: See product labeling for indications, contraindications, warnings, cautions and directions for use.

PRINTED IN USA 10/02 ME-DXCS500